



PUFFCO

PROXY

WHAT'S INSIDE [01]

HOW TO USE [02-04]

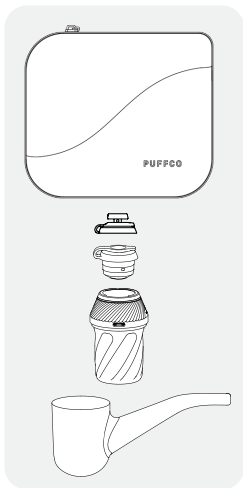
HEAT SETTINGS [05]

CLEANING [06 - 07]

TROUBLESHOOTING [08]

TIPS & TRICKS [09]

What's Inside



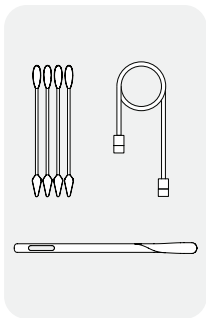
What's New



3D Chamber



Joystick Cap



What's Inside

- Carry Case
- Proxy Base
- Proxy 3D Chamber
- Joystick Cap
- Oculus Carb Cap*
- Glass Pipe
- Loading Tool
- Cotton Swabs
- USB-C Cable

How To Use



Fully charge device before first use. May take up to 15 minutes for light to indicate charging. The lights will glow indicating the battery level:

- Green (Full)
- Orange (Half)
- Red (Low)

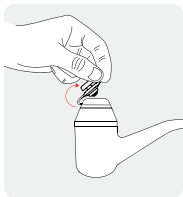


To turn the Proxy on/off, press & hold the button for 3 seconds.

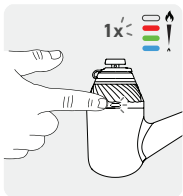


Use the loading tool to place extract on the bottom surface of the 3D Chamber.

How To Use



Replace the Joystick Cap on top of 3D Chamber and press down until snug.



Single-click button to toggle through each heat setting.

White (Peak)

Red (High)

Green (Med)

Blue (Low)

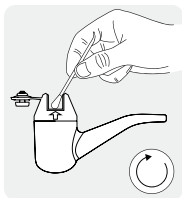


Double-click to initiate heat cycle, press & hold to cancel. Pulsing light indicates device is heating up.

How To Use



Device will flash & vibrate twice when ready. For best results, inhale gently while rotating the Joystick.



Clean 3D Chamber after each use with a cotton swab. Wipe gently in a circular motion while chamber is warm.

Choose a Setting

Each heat setting offers a different experience. We suggest experimenting to find which settings work best for you and your consumption preferences.

You can also experiment further with other interchangeable pieces from the Proxy Collection.



Peak [Power] - 560°F

Delivering the most vapor and strength with less flavor.



High [Strong] - 525°F

Higher vapor production while maintaining flavor quality.



Med [Balanced] - 510°F

The best of both worlds. Balanced flavor and vapor.



Low (Flavor) - 490°F

Best for delicate extracts. Optimal flavor, least vapor.

Chamber



Remove the Joystick with Jacket & Tether, then unscrew the 3D Chamber from base.

Use a cotton swab to gently remove any residue with 90%+ isopropyl alcohol.

Submerge the chamber in 90%+ isopropyl alcohol for 20 minutes. Air-dry completely before reattaching.

Do not rinse with water.

 Allow chamber to cool completely before handling.

 Isopropyl alcohol is highly flammable; allow chamber to air-dry completely before reattaching.

Base



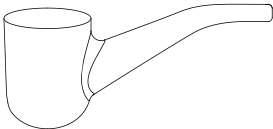
Remove glass and chamber from base.

Use a cotton swab soaked in 90%+ isopropyl alcohol to gently clean the gold contact points and air path.

Allow to air-dry completely before reattaching components.

DO NOT rinse or submerge in liquid.

Glass



Carefully remove glass from base.

Once removed, submerge glass in 90%+ isopropyl alcohol for 20 minutes.

After soaking, thoroughly rinse glass with water and let air-dry completely before reattaching to base.



Visit Puffco.com/support
for how-to videos and helpful tips.

Error Codes

No chamber (white white white white)

Remove and reinsert chamber.

Chamber error (red white red white)

Remove and clean chamber before reinserting.

Device overheating (red for 5 seconds)

Allow device to cool before using.

Low battery (red red red)

Ensure device is fully charged before using.

General Warnings

Do not overfill the chamber.

Do not blow or exhale hard into the glass.

Strong inhales may cause spillage and damage to your chamber.

Do not charge or operate below 32° F or above 100° F.

Use only with the provided cable.

Keep away from moisture and high humidity.

Store in a cool dark place when not in use.

During use the chamber is hot (burn hazard).

Please allow product to cool down 10-minutes between heating cycles

**Not for use with tobacco, nicotine containing e-liquids,
or any synthetic nicotine or nicotine substitute.**

Boost Mode

Boost Mode increases the time and temperature of your hit. To activate, double-click to initiate heat cycle, then double-click again once desired temperature is reached. Boost Mode increases heat cycle duration by 15 seconds & temperature by 18°F.

Please do not return your Proxy to the store.
Keep your proof of purchase.

@Puffco

This appliance is not intended for use by persons (including children) with reduced physical, sensory, or mental capabilities, or lack of experience and knowledge, unless they have been given supervision or instruction concerning use of the appliance by a person responsible for their safety.

Children should be supervised to ensure that they do not play with the appliance.

This appliance must only be supplied at safety extra low voltage corresponding to the marking on the appliance.

If charger is used for charging purpose, only the certified charger that comply with IEC/EN 60335 or IEC/EN 61558 can be used.

WARNING: Use only an external supply with the following specifications: <5V > <1.2A>

The normal temperature range for charging the battery: 32 F – 100 F

The battery type: Lithium battery, 1s3p

Dispose of batteries according to your local environmental laws and guidelines.

The lithium-ion battery in the device should be serviced or recycled by an authorized service provider and disposed of separately from household waste.

Do not handle a damaged or leaking battery.

Do not let leaking battery fluid come in contact with your eyes skin or clothing.

Do not expose the device or battery to excessive temperatures.

Be aware of the risk of terminals of the battery-operated device or battery being short circuited by metal objects.

IEC Compliance

This appliance contains batteries that are non-replaceable. This appliance contains batteries that are only replaceable by skilled persons.

When the battery is at end of life, the appliance shall be properly disposed of.

After heatup, double click to activate boost mode. This extends the time and increases the temperature of your hit. You can continue to boost as needed.

Do not initiate heat up more than four (4) times consecutively

This appliance contains batteries that are non-replaceable. This appliance contains batteries that are only replaceable by skilled persons.

When the battery is at end of life, the appliance shall be properly disposed of.

After heatup, double click to activate boost mode. This extends the time and increases the temperature of your hit. You can continue to boost as needed.

Do not initiate heat up more than four (4) times consecutively